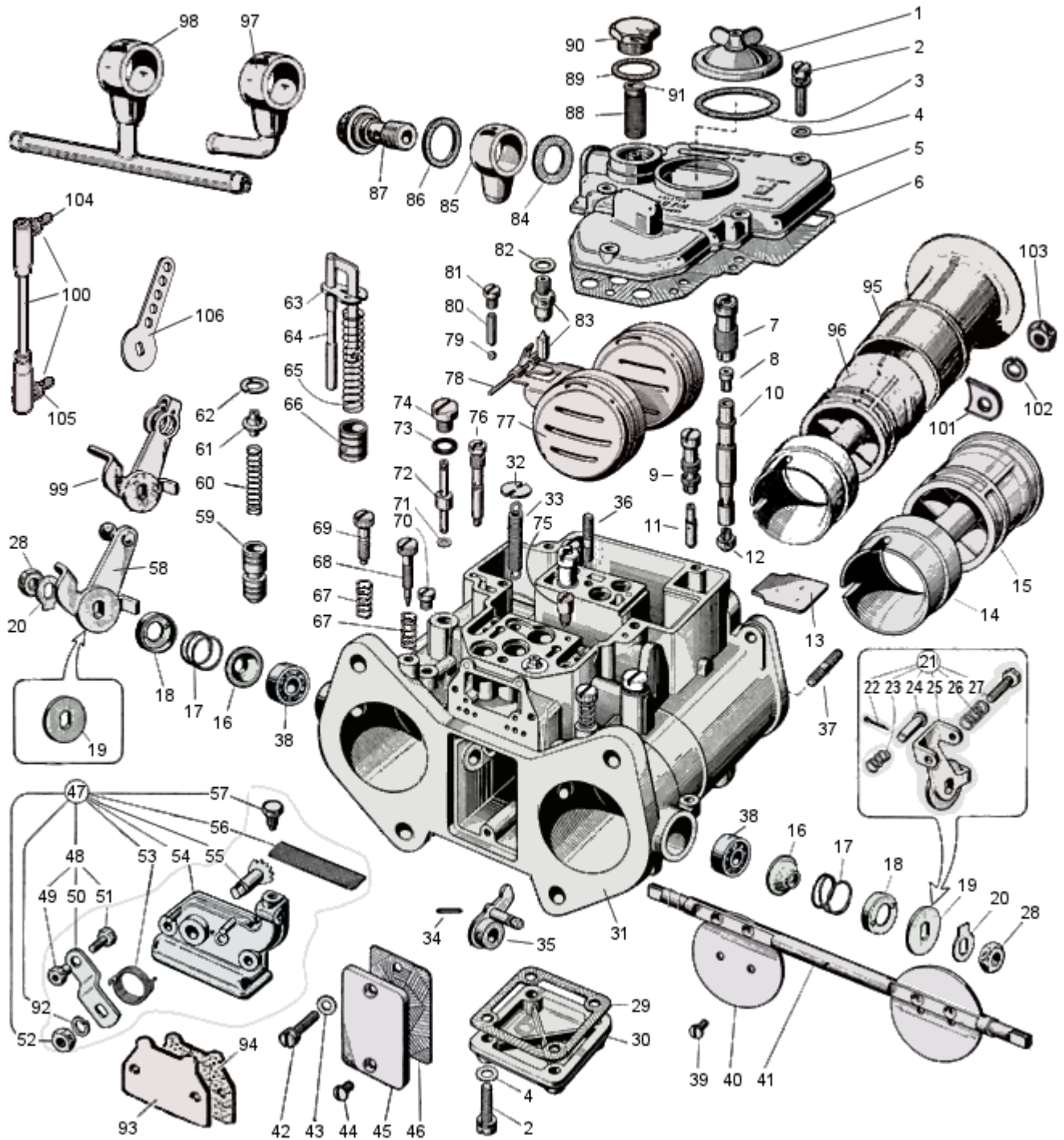


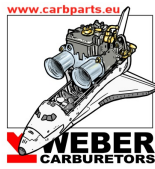


WEBER 40 DCOE early type - exploded view



<https://www.carbparts.eu>

Prices and product availability are subject to change



CarbDeal

Selling carburetor parts since 2005



WEBER 40 DCOE early type - Parts list

No	Part No	Price	Pcs	Description	No	Part No	Price	Pcs	Description
1	32376.003	\$ 9.5	1	Jet Cover	54	32556.001	\$ 0	1	Cold Start Unit Body
2	64700.001	\$ 5	5	Cover Screw	55	10085.003	\$ 0	1	Shaft
3	41550.002	\$ 3	1	Gasket	56	37000.016	\$ 0	1	Filter Screen
4	55510.034	\$ 0.4	5	Washer	57	64605.017	\$ 2.7	1	Fixing Bolt
5	31734.197	\$ 69	1	Carb Top Cover	58	45041.009	\$ 31.6	1	Lever
6	41715.011	\$ 2	1	Carb. Cover Gasket	59	64330.003	\$ 7	2	Starter Valve
7	52580.001	\$ 5.5	2	Emulsion Tube Holder	60	47600.005	\$ 3.5	2	Starter Valve Spring
8	77401	\$ 5.2	2	Air Corrector Jet	61	12775.004	\$ 3.5	2	Spring Retainer
9	52585.006	\$ 6.5	2	Idle Jet Holder	62	10140.010	\$ 3.5	2	Spring Washer
10	61450	\$ 29	2	Emulsion Tube	63	52140.004	\$ 3	1	Pump Screen retainer
11	74800	\$ 3.3	2	Idle Jet	64	10410.015	\$ 9	1	Pump Rod
12	73401	\$ 15	2	Main Jet	65	47600.064	\$ 5.5	1	Pump Spring
13	52130.003	\$ 2	1	Plate	66	58602.003	\$ 8.5	1	Pump Plunger
14	72302	\$ 44	2	Choke Tube 40DCOE	67	47600.007	\$ 2.5	2	Idle Screw Spring
15	70001	\$ 0	2	Auxiliary Venturi early - bolton air horns	68	64750.001	\$ 3	2	Idle Mixture Screw
16	41570.001	\$ 1.1	2	Dust Cover	69	64625.012	\$ 6.5	1	Throttle stop screw
17	47600.063	\$ 2.1	2	Spring	70	61015.002	\$ 6	2	Progression Hole Plug
18	58000.007	\$ 3.1	2	Retaining Cover	71	41535.021	\$ 1.3	2	Pump Gasket
19	55555.010	\$ 2	1	Washer	72	76801	\$ 5.6	2	Pump Jet
20	55520.004	\$ 1.1	2	Lock washer	73	41565.009	\$ 0.7	2	Pump Cover Seal
21	45048.149	\$ 18	1	Balance lever	74	61015.008	\$ 9	2	Pump Cover
22	32610.002	\$ 0.1	1	Split pin	75	79701	\$ 7.9	1	Inlet Valve With Exhaust
23	47600.094	\$ 2.5	1	Spring	76	75605	\$ 12	2	Starter Jet
24	52010.097	\$ 0.7	1	Pin	77	41030.005	\$ 39.5	1	Float
25	45041.147	\$ 0	1	Balance lever	78	52000.001	\$ 1.9	1	Float Fulcrum Pin
26	64955.104	\$ 2.5	1	Spring	79	58300.001	\$ 1	2	Pump Valve Ball
27	55520.004	\$ 1.1	1	Screw	80	52730.001	\$ 3.9	2	Stuffing Ball
28	34710.003	\$ 1.1	2	Shaft Nut	81	61015.006	\$ 3.9	2	Retaining Screw
29	41640.001	\$ 3	1	Gasket	82	83102.120	\$ 0.3	1	Needle Valve Gasket
30	32374.008	\$ 14	1	Bottom Bowl Cover	83	79503	\$ 9.5	1	Needle Valve
31		\$ 0	1	Carburetor Body	84	41530.031	\$ 0.3	1	Fuel Union Gasket
32	52210.006	\$ 1.7	1	Spring Anchor Plate	85	10534.019	\$ 0	1	Fuel Union Blank
33	47605.027	\$ 1.9	1	Throttle Return Spring	86	41530.024	\$ 0.3	1	Outer Fuel Union Gasket
34	58445.001	\$ 0.4	1	Pin	87	12715.008	\$ 9	1	Fuel Union Bolt
35	45082.005	\$ 10	1	Pump Control Lever	88	37022.010	\$ 5.8	1	Fuel Filter
36	64955.007	\$ 7.9	1	Stud	89	41530.024	\$ 0.3	1	Gasket
37	64955.101	\$ 0.4	1	Stud	90	61002.010	\$ 7.1	1	Filter Cover
38	32650.001	\$ 3.9	2	Throttle Shaft Bearing	91	12775.026	\$ 2	1	Plug
39	64570.006	\$ 2.5	4	Throttle Plate Screw	92	55525.010	\$ 0.4	1	Washer
40	64005.059	\$ 12.4	2	Throttle Plate 40 DCOE	93	52135.008	\$ 6	1	Blanking plate
41	10005.438	\$ 53	1	Throttle Shaft 40 DCOE	94	ST2283	\$ 1	1	Blanking plate gasket
42	64700.004	\$ 2.4	2	Cold Start Fixing Screw	95	52840.012	\$ 19.7	2	Air horn
43	55510.038	\$ 0	2	Flat Washer	96	70003	\$ 38.9	2	Auxiliary Venturi with clip - slide in air horns
44	64570.009	\$ 3	2	Flat Fixing Screw	97	10536.035	\$ 8	1	Fuel Union L pipe
45	52135.024	\$ 5	1	Inspection plate	98	10536.034	\$ 13.8	1	Fuel inlet T pipe
46	41640.021	\$ 1	1	Inspection plate Gasket	99	45048.007	\$ 17	1	Throttle lever
47	32556.002	\$ 39	1	Cold Start Unit	100	ST2559	\$ 22	1	Rod with ball ends
48	45027.003	\$ 0	1	Lever Assy.	101	52150.012	\$ 12	4	Air horn Tab
49	34720.002	\$ 0	1	Nut	102	55525.010	\$ 0.4	4	Spring Washer
50	45025.029	\$ 0	1	Lever	103	34705.004	\$ 0.7	4	Air horn fixing nut
51	64800.002	\$ 0	1	Wire screw	104	ST2460	\$ 5	1	Ball end Left thread
52	34715.010	\$ 0	1	Nut	105	ST1937	\$ 5	1	Ball end Right thread
53	47610.006	\$ 7.5	1	Return Spring	106	ST1936	\$ 6	1	Universal lever

<https://www.carbparts.eu>

Prices and product availability are subject to change

